



COMBIVERT SYSTEM V

4-QUADRANT DRIVE SYSTEM 600 ... 1000 KVA

SYSTEM V

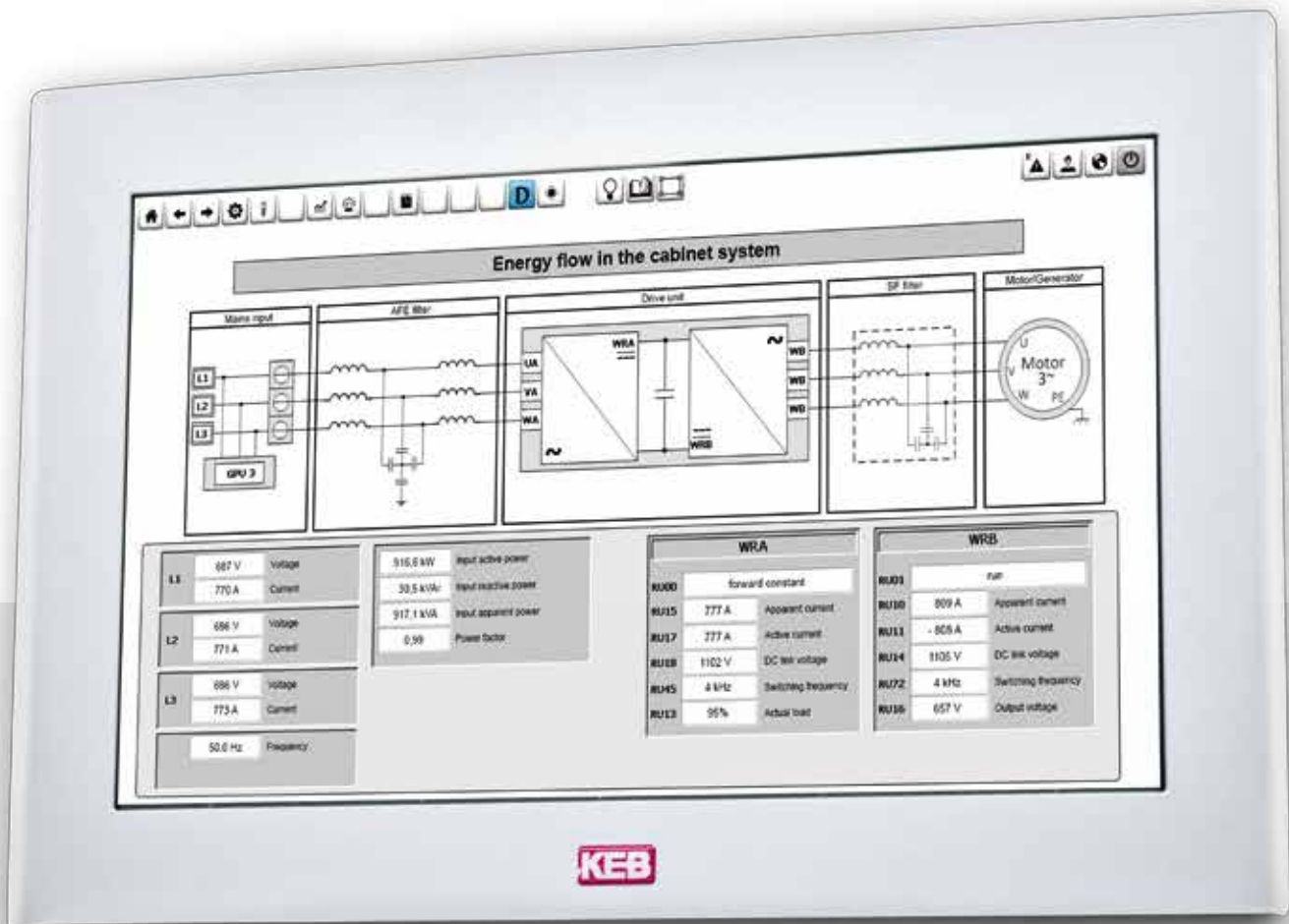


MECHANICAL DIMENSIONS

Basic module		
H x W x D	mm	1800 x 1400 x 600 + base 200
Sine-wave filter module		
H x W x D	mm	1800 x 600 x 600 + base 200
Bus-bar connection		
H x W x D	mm	1800 x 300 x 600 + base 200
Weight		1500 kg

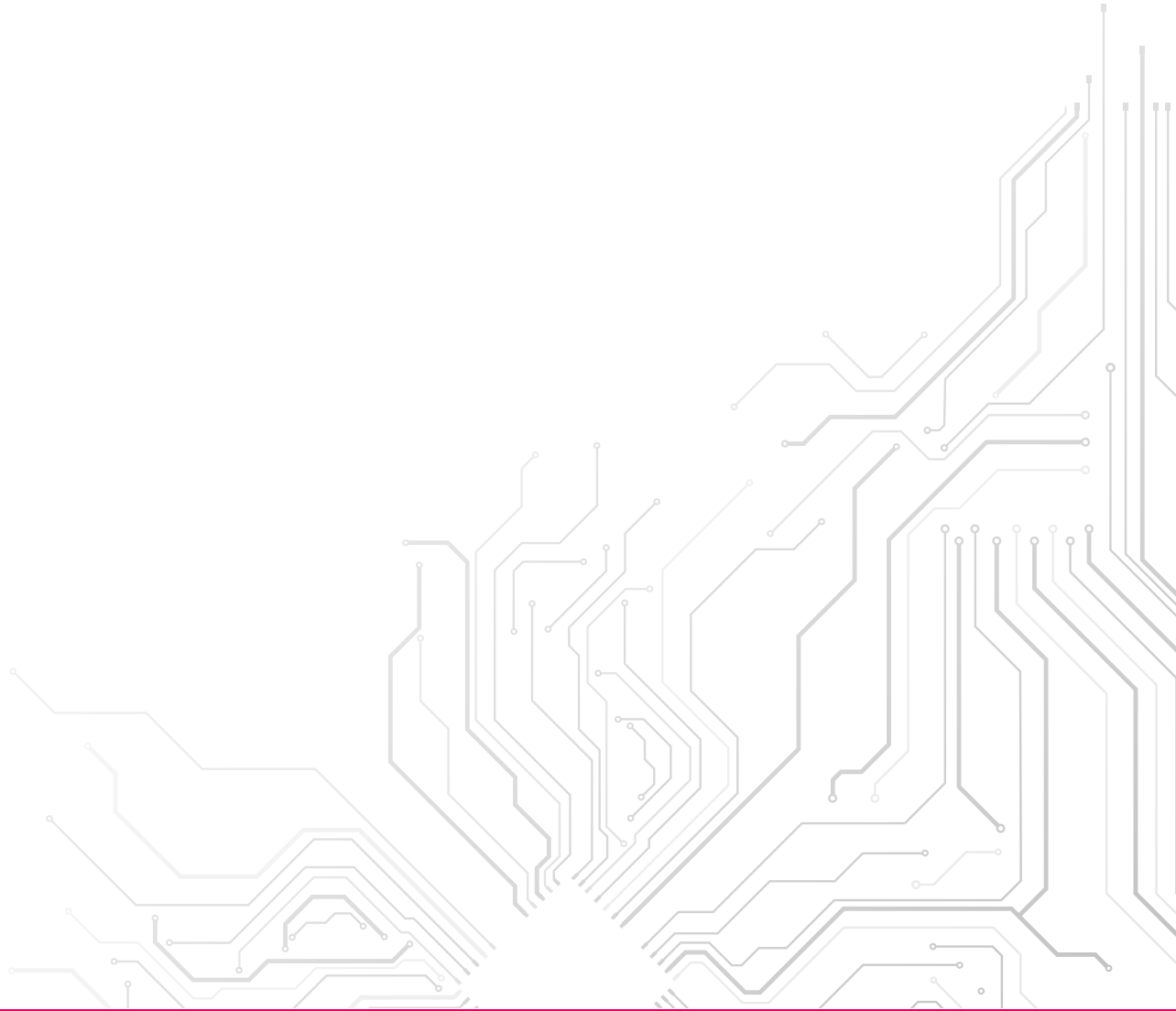
ELECTRICAL DATA

Rated input voltage		U_N	690 V ac	
Input voltage range		U_{in}	400 ... 760 V ac $\pm 0\%$	
Mains frequency		f_N	50/60 Hz ± 2 Hz	
Mains phases			3	
Approved mains forms			TN, TT	
Mains unbalances			8 %	
Rated switching frequency		f_{SN}	4 kHz	
			SIZE 33	SIZE 37
Rated input power	kVA	S_N	600	1.000
Max. input power	kW	P_{max}	450	710
Rated input current	A ac	I_N	500	820
Max. input current	A ac	$I_{in max}$	625	1.025
Rated output current	A ac		500	820
Max. short-time current limit	A ac		625	1230



INCLUDED FEATURES

- AFE with LCL filter
- Drive controller with optional sine-wave filter
- DC link coupling capability
- Integrated IEC 61131 PLC (free-programmable)
- 15.6" HMI
- Fieldbus: Profibus, Profinet, EtherCAT, CAN, Interbus, Powerlink
- EMC filter
- High IP54 of protection level (special design up to IP67K)
- Up to 4 encoder interfaces
- Router for remote access (GSM-/ UMTS or Internet)
- Mains measuring device
- Control via 24 V potential free terminal signals (additional)
- Liquid cooling 2.5" external thread



Automation with Drive

www.keb.de

KEB Automation KG Südstraße 38 32683 Bartrup Tel. +49 5263 401-0 E-Mail: info@keb.de

© KEB 000000-51V6 03-2017 Subject to technical alterations!